

## Remove Peachtree Using Windows Installer CleanUp Utility

### Question

How do I use the Windows Installer Cleanup Utility to uninstall Peachtree Accounting?

### Answer

This utility is used to remove failed instances of Peachtree Accounting that occur, due to issues associated with the Windows Installer and typically when you attempt to install Peachtree you receive the **Error 1639 - Invalid command line argument**.

To use the utility, follow these steps:

1. In **Internet Explorer**, open the web link <http://support.microsoft.com/kb/290301>.
2. The Microsoft Support article titled "**Description of the Windows Installer CleanUp Utility**" appears. Scroll down the web page until you see the phrase The following file is available for download from the Microsoft Download Center. Click the web link **Download the Windows Installer Cleanup Utility package now**.
3. If the message prompt "**Do you want to run or save this file?**" appears, click **Run**.
4. The "**Windows Installer Clean Up Setup**" window appears as shown in Figure 1. Click **Next**.



Figure 1

5. Select "**I accept the License Agreement**" as shown in Figure 2. Click **Next**.

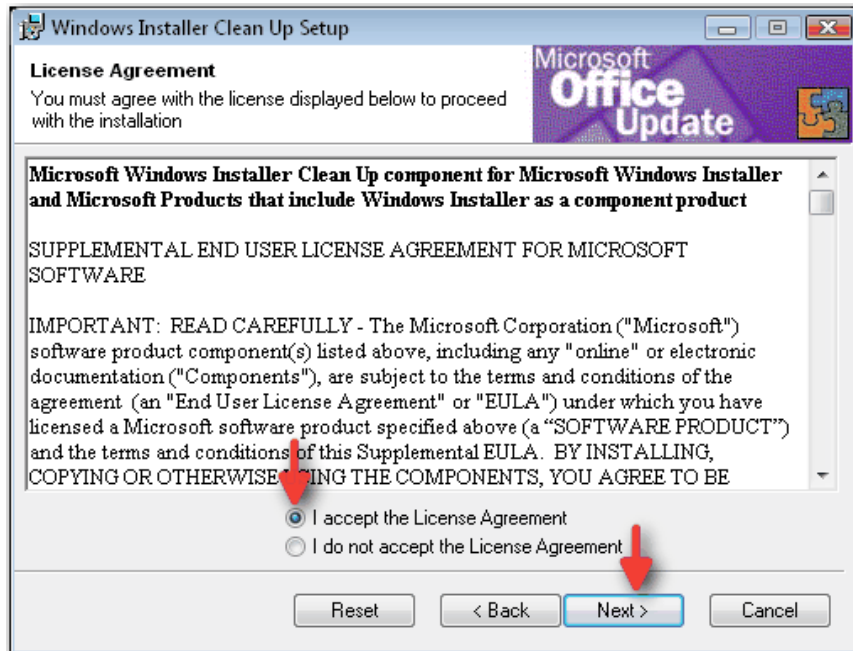


Figure 2

6. Click **Next** to begin the installation process as shown in Figure 3.

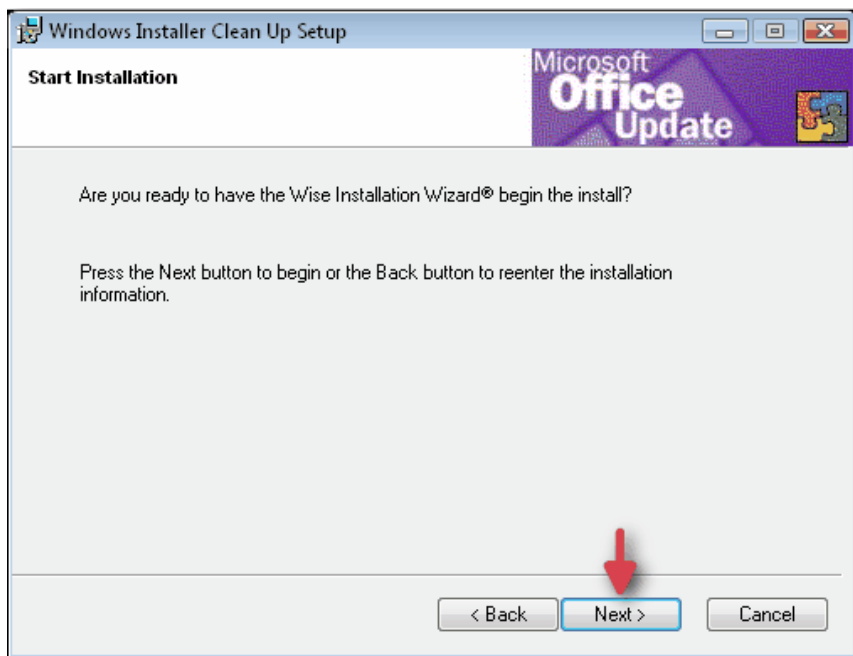


Figure 3

7. The installation screens appear.
8. The **"Windows Installer Clean Up has been successfully installed"** window appears, as shown in Figure 4. Click **Finish**.

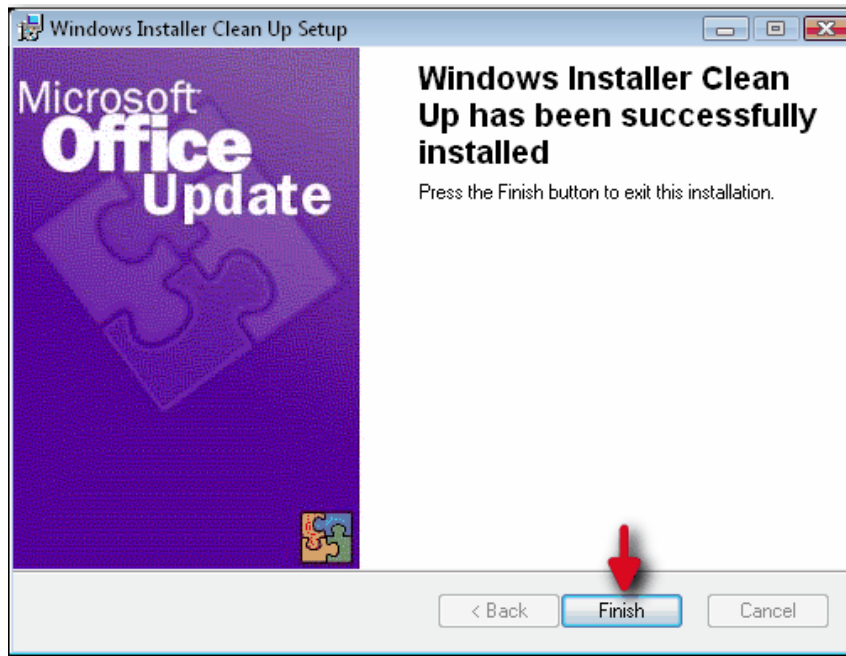


Figure 4

9. From the **Start** menu, open "**Windows Installer Clean Up**".
10. In the "**Installed Products**" section of the wizard, highlight the release of Peachtree Accounting you wish to uninstall. Click **Remove** as shown in Figure 5.

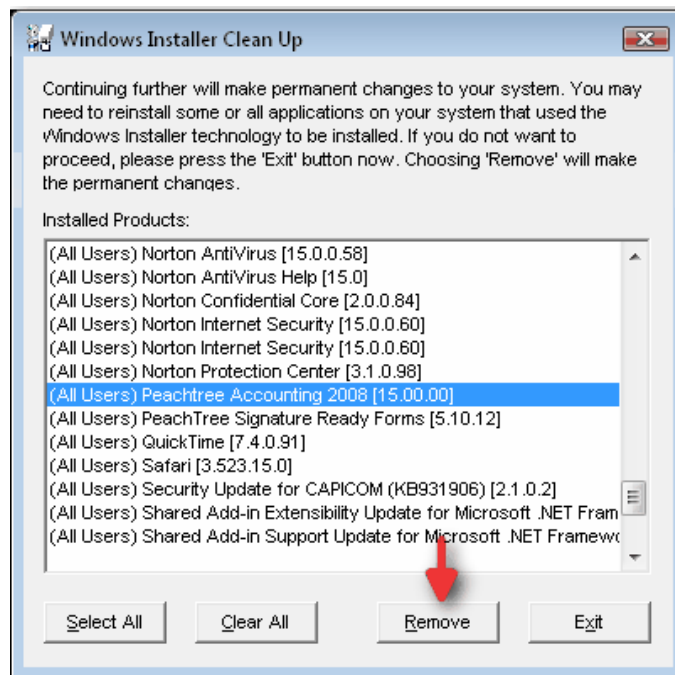


Figure 5

11. Click **Exit**.
12. Remove the program INI file from the following directories depending on the operating system (**Note:** To determine the name of the INI for the flavor of Peachtree you are attempting to install, please refer to Answer ID 6489 [click here.](#)):
  - a. Windows XP/Vista: C:\WINDOWS
  - b. Windows 2000: C:\WINNT
13. Reinstall Peachtree Accounting.

Sage Software makes no warranties, representations or undertakings about any of the content of articles (including, without limitation, any as to the quality, accuracy, completeness or fitness for any particular purpose of such content).

The contents of articles are Copyright © Sage Software 2006. Reproduction of part or all of the contents in any form is prohibited unless for personal use. None of the content of this article may be copied or otherwise incorporated into any other document, publication or other work in any form (whether hard copy, electronic or other).

© 2006 Sage Software SB, Inc. All Rights Reserved.

Please visit the Knowledge Center / Live Chat Assistance again soon!